

Who are we?

The Dunn-Seiler Museum of Mississippi State University is a non-profit organization founded in 1946.

The first collections in the Dunn-Seiler museum date to the late 1800's. In 1946, the Board of Trustees of Institutions of Higher Learning passed a resolution, which granted authority to develop the Franklin Seiler Museum. Mr. Franklin Carl Seiler (1916–1945), a geology student and later instructor within the department, was killed in action during WW II in Europe.

In 1962, the museum was renamed the Dunn-Seiler Museum in recognition of the efforts of Dr. Paul Heaney Dunn (1895–1967), who was department head from 1934 to 1962 and whose efforts led to the development of the museum.

Questions



If you have any questions concerning the Dunn-Seiler Museum please call our Geosciences office at (662) 325-3915 or email one of our museum faculty.

Amy Moe-Hoffman
Collections Manager
apm105@msstate.edu

Dr. Renee Clary
Museum Director
rclary@geosci.msstate.edu



Dunn-Seiler Museum



at
Mississippi State
University

Exhibit Highlights

The Dunn-Seiler Museum houses mineral and rock collections, meteorites, and extensive fossil displays that facilitate viewers' understanding of the 4.6 billion year history of our planet. Visitors can learn about mineral families and properties, igneous, sedimentary, and metamorphic rocks, and the processes of the rock cycle, Bowen's reaction series, and other cycles involved. They can also learn about mass extinctions, asteroids, karst and caves, plate tectonics, and Mississippi's geology.

The Dunn-Seiler displays a Triceratops skull replica, the skull of a Cretaceous Crocodile, and many fossils from Mississippi and the Southeast.

Over 1,000 visitors, ranging in age from 8 to 70+, visit the Dunn-Seiler every year. While the majority of visitors are school students between grades 3 and 9, the museum has something for everyone.



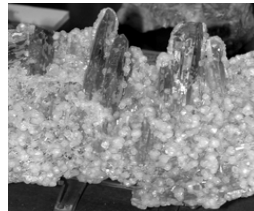
WHAT WILL YOU SEE at DUNN- SEILER?



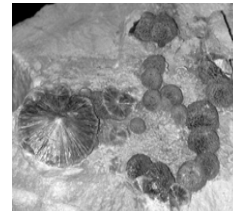
Smilodon skull cast
Saber Toothed Cat



Ammonite
Lowndes Co, MS



Amethyst and
Dolomite crystals



Wavellite
crystals



Mastodon molars
Mississippi

How to Visit

Museum tours, presentations, and fossil excursions can be arranged by calling the Department of Geosciences office at (662) 325-3915.

Location

Mississippi State University
355 Lee Blvd.
112 Hilbun Hall
Mississippi State, MS 39762

